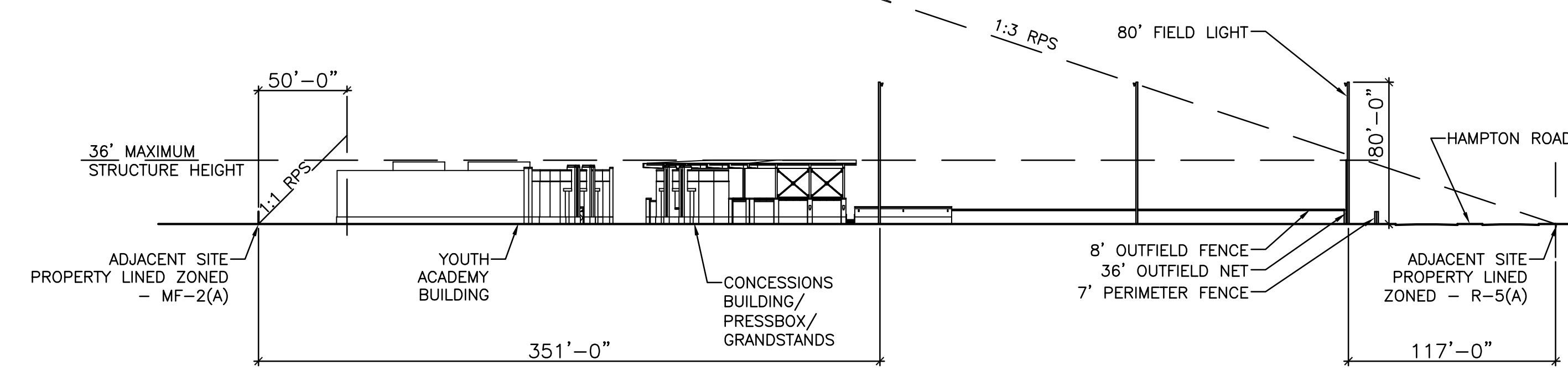


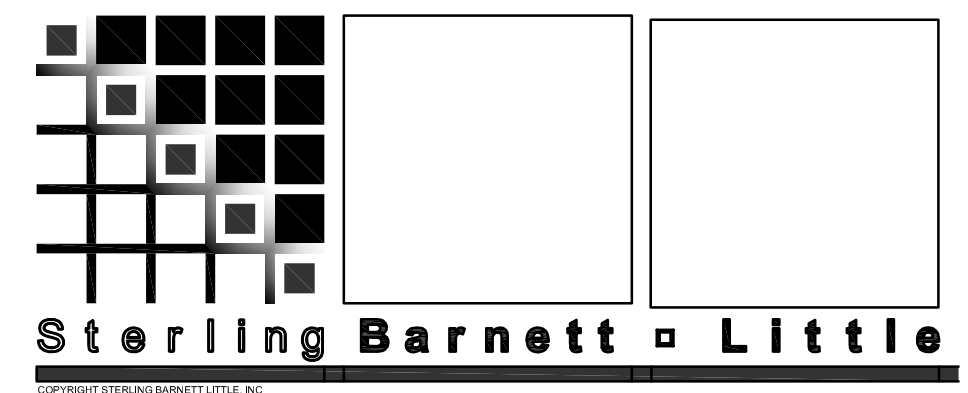
PD 508 - TRACT 2, 7 & PARTIAL 10 OVERALL SITE PLAN
 1" = 120'
 SCALE: 1" = 120'-0"



PD 508 - TRACT 7 RPS ELEVATION
 1" = 60'
 SCALE: 1" = 60'-0"

TEXAS RANGERS MLB URBAN YOUTH ACADEMY AT MERCY STREET LEAGUE FIELDS

3939 N HAMPTON ROAD DALLAS, TEXAS 75212
 DEVELOPMENT PLAN SUP TRACT 7 & 10 - PD 508

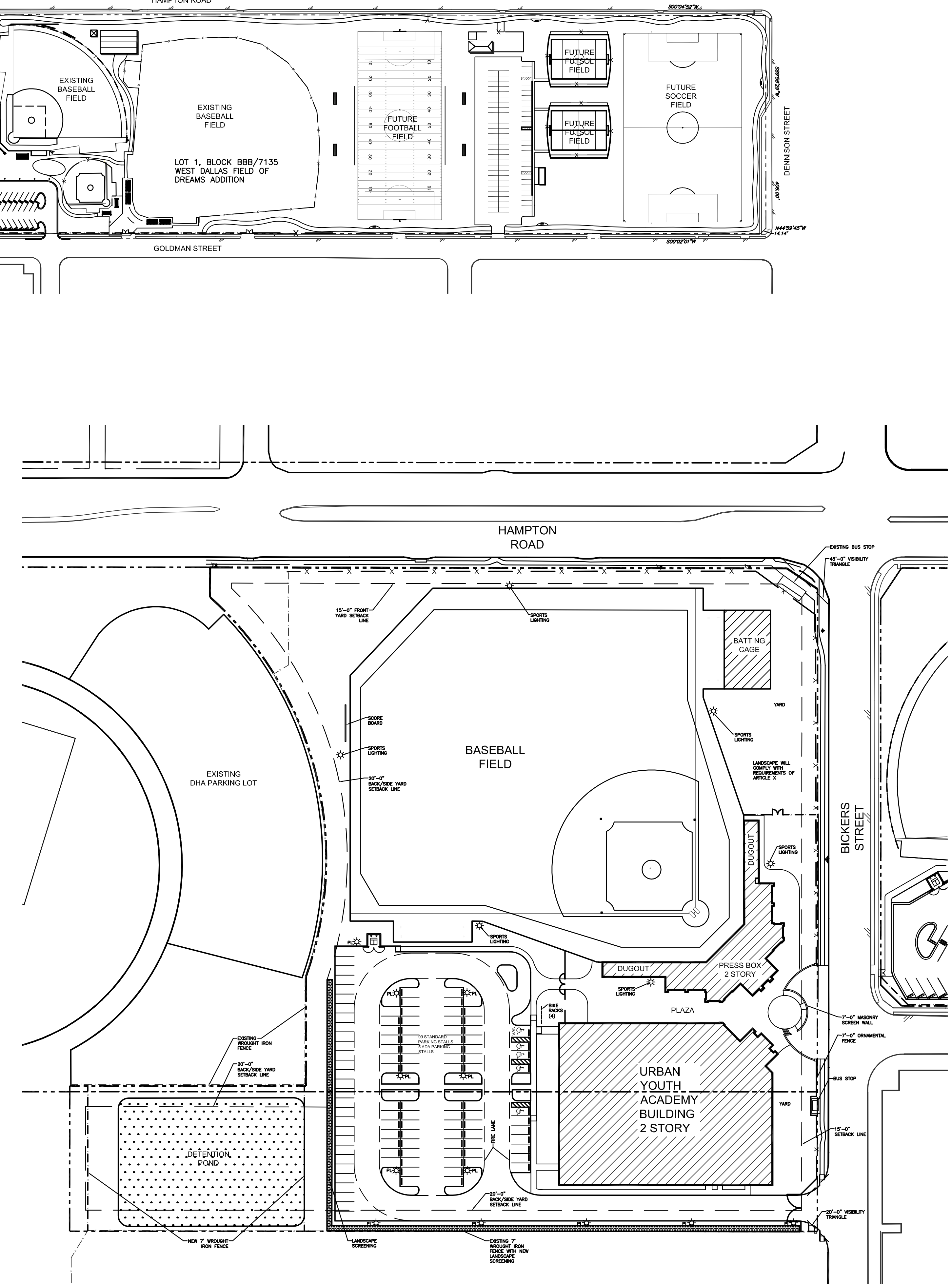


ARCHITECT
 STERLING BARNETT LITTLE, INC
 1000 BALLPARK WAY, SUITE 200
 ARLINGTON, TX 76112

SBL PROJECT NUMBER
 201524.00

ISSUE DATE
 04.22.2016

PARKING CALCULATIONS			
	AREA	PARKING FACTOR	REQUIRED PARKING
BASEBALL FIELD			
CONCESSIONS, TOILETS, STORAGE, PRESS BOX	1,698 SQ FT	1 PER 150 SQ FT	11 SPACES
ACADEMY BUILDING			
GROUND FLOOR: ADMIN, SERVICE	6,779 SQ FT	1 PER 150 SQ FT	45 SPACES
GROUND FLOOR: COURT AREA	23,409 SQ FT	3 PER COURT	3 SPACES
MEZZANINE	6,779 SQ FT	1 PER 150 SQ FT	45 SPACES
TOTAL SPACES REQUIRED			104 SPACES
TOTAL SPACES PROVIDED			104 SPACES
ALL OTHER PREVIOUS APPROVED AND PERMITTED PROPERTIES ASSUMED TO BE CODE REQUIRED PARKING - NO MODIFICATIONS IN THIS PLAN			



PD 508 - ENLARGED SITE PLAN
 1" = 120'-0"
 SCALE: 1" = 60'-0"